



CRINA

Patient ID: CRINA

Species: Dog

Birthdate: Nov 1, 2012

Owner: Unknown

Gender: Female

Breed: Unknown

Doctor: Unknown

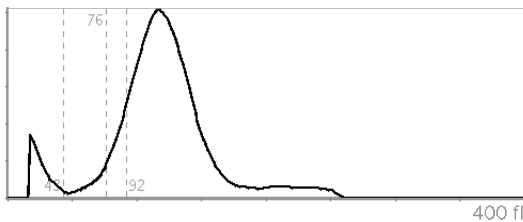
# Hematology

🕒 Date: Nov 14, 2022 11:12 AM 📄 Analyzer SN: 367547

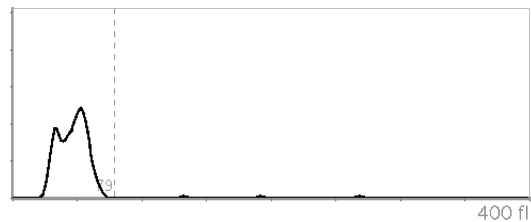
	RESULT	LOW	NORMAL	HIGH
<b>WBC</b> White Blood Cells	<b>51.70</b> 10 <sup>9</sup> /l		6.0	17.0
<b>LYM</b> Lymphocyte	<b>1.93</b> 10 <sup>9</sup> /l		1.0	4.8
<b>MON</b> Monocyte	<b>4.62</b> 10 <sup>9</sup> /l		0.2	1.5
<b>NEU</b> Neutrophil	<b>45.15</b> 10 <sup>9</sup> /l		3.0	12.0
<b>EOS</b> Eosinophil	<b>0.01</b> 10 <sup>9</sup> /l		0.0	0.8
<b>BAS</b> Basophil	<b>0.00</b> 10 <sup>9</sup> /l		0.0	0.4
<b>LYM%</b> Lymphocyte (%)	<b>3.7</b> %			
<b>MON%</b> Monocyte (%)	<b>8.9</b> %			
<b>NEU%</b> Neutrophil (%)	<b>87.3</b> %			
<b>EOS%</b> Eosinophil (%)	<b>0.0</b> %			
<b>BAS%</b> Basophil (%)	<b>0.0</b> %			
<b>RBC</b> Red Blood Cells	<b>6.58</b> 10 <sup>12</sup> /l		5.5	8.5

	RESULT	LOW	NORMAL	HIGH
<b>HGB</b> Hemoglobin	<b>15.2</b> g/dl		12.0	18.0
<b>HCT</b> Hematocrit	<b>47.73</b> %		37.0	55.0
<b>MCV</b> Mean Corpuscular Volume	<b>73</b> fl		60.0	77.0
<b>MCH</b> Mean Corpuscular Hemoglobin	<b>23.2</b> pg		19.5	24.5
<b>MCHC</b> Mean Corpuscular Hemoglobin Concentration	<b>31.9</b> g/dl		31.0	39.0
<b>RDWc</b> Red Blood Cell Distribution Width, Coefficient of Variation	<b>15.3</b> %		14.0	20.0
<b>RDWs</b> Red Blood Cell Distribution Width, Standard Deviation	<b>42.2</b> fl			
<b>PLT</b> Platelet	<b>56</b> 10 <sup>9</sup> /l		165.0	500.0
<b>MPV</b> Mean Platelet Volume	<b>10.1</b> fl		3.9	11.1
<b>PCT</b> Plateletcrit	<b>0.06</b> %			
<b>PDWc</b> Platelet Distribution Width, Coefficient of Variation	<b>33.4</b> %			
<b>PDWs</b> Platelet Distribution Width, Standard Deviation	<b>13.4</b> fl			

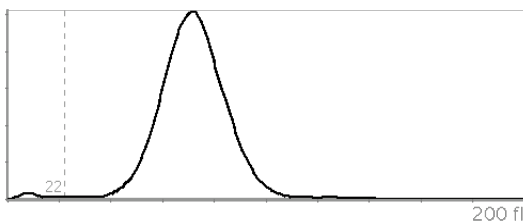
WBC Histogram



EOS Histogram



RBC Histogram



PLT Histogram

